

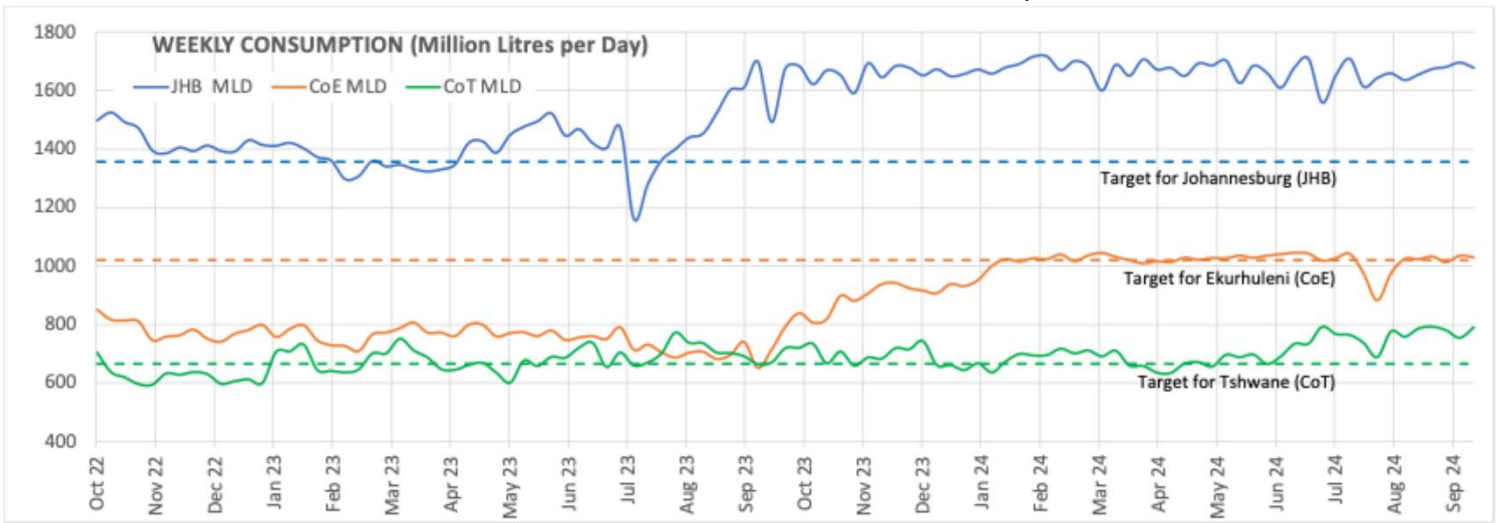
# WEEKLY UPDATE:

## GAUTENG WATER SECURITY DASHBOARD

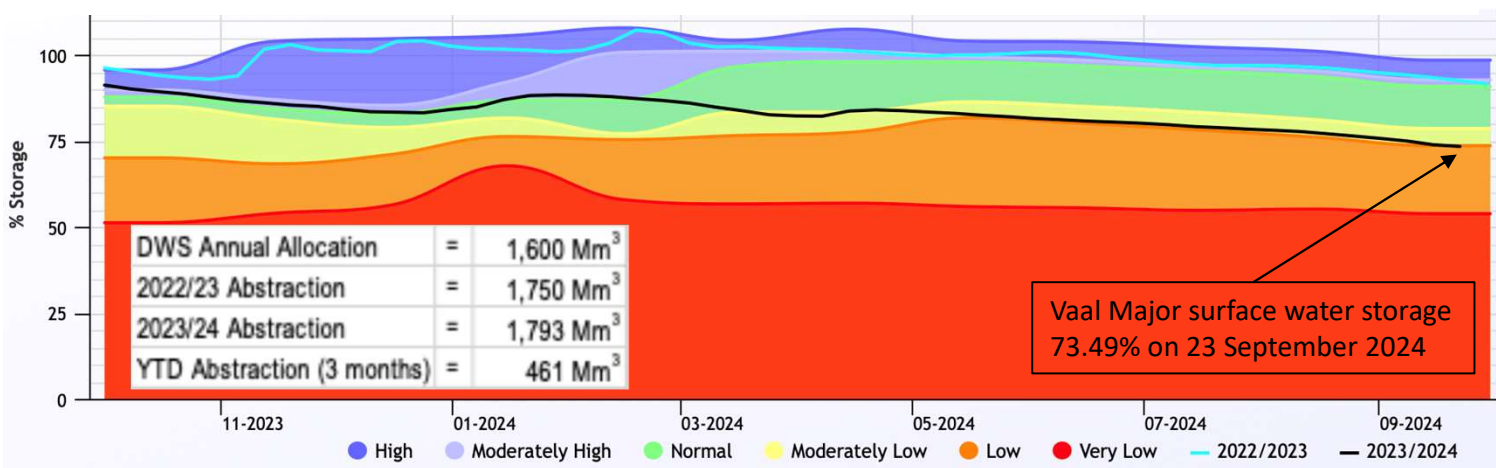
week to 27 September 2024

1. METRO WATER CONSUMPTION	TOTAL RW	Joburg	Ekurhuleni	Tshwane
This Week Average Daily Use (MLD)	4,071	1,651	1,010	773
Last Week Average Daily Use (MLD)	4,109	1,679	1,028	791
Water Use Efficiency Target Use (MLD)	3,044	1,356	1,022	666
DIFFERENCE BETWEEN TARGET AND ACTUAL (MLD)	1065	295	12	107
% Deviation from target use	35%	22%	-1%	16%
Gross Per capita use (l/cd)	290	276	253	198
Increase/Decrease from previous week	↓	↓	↓	↓

### 2. TRENDS for OVERALL WEEKLY CONSUMPTION OR WATER USED FOR JOHANNESBURG, TSHWANE & EKURHULENI METROS



### 3. IVRS SYSTEM STATUS



#### Notes:

- MLD = millions of litres per day, the common measurement of total water use for cities
- The three metros use  $\pm 77\%$  of water produced by Rand Water
- Rand Water metro data published weekly on their website (updated 26 September 2024) for Joburg, Ekurhuleni & Tshwane. Source: Rand Water website
- WUE = Water use efficiency targets is the target demand that matches the licence conditions of Rand Water. This is shown as target demand in dotted lines on the graph
- The observed IVRS system storage has entered the "low" zone, 15% less than a year ago and is tracking in the worst sequence projection. Rand Water has imposed Level 1 restrictions. DWS Restrictions are implemented on the IVRS when dam levels are below 60% at the beginning of the hydrological year starting in May of each year. Should over-abstraction continue in rainfall be lower than normal, the DWS model is likely to indicate that restrictions be imposed in May 2025. Source: <https://www.dws.gov.za/niwis2/SurfaceWaterStorage>